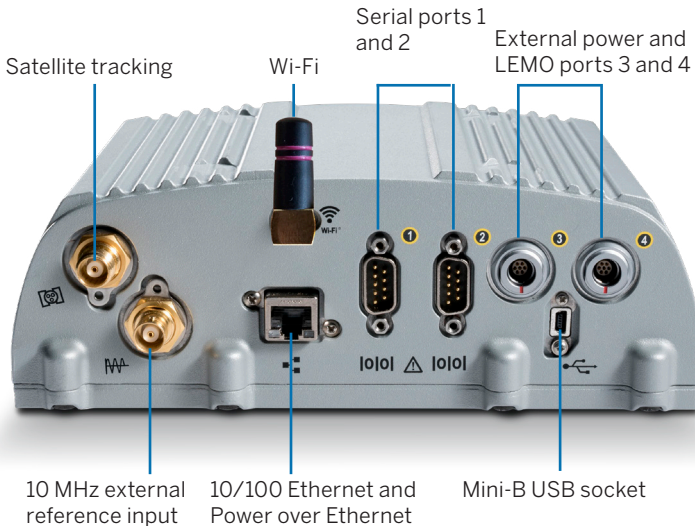


# 阿洛伊

## GNSS REFERENCE RECEIVER



# WHAT'S IN THE BOX

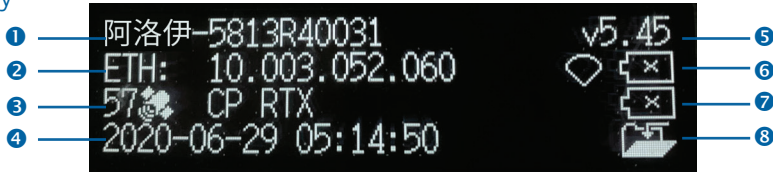
Description	Description
<b>1</b> 阿洛伊 accessory kit, P/N 109ACC-CN	<b>8</b> Cable – 2 m, Ethernet 10BaseT CAT5, P/N 50150-00
<b>2</b> Power supply, 65 W, 19 V, 3.43 A, 100-240 V AC, P/N 107000 	<b>9</b> USB Mini-B Plug Host to A Jack accessory cable, P/N 74399-00 
<b>3</b> Power cord kit – USA, EU, UK, AUS, with a C7 connector, P/N 78651 	<b>10</b> USB Mini-B Plug to A Plug accessory cable, P/N 74408-00 
<b>4</b> Cable – Adapter, 0.15 m, SAE-to-DC socket (2.1 mm). P/N 88769-00. 	<b>11</b> Tripod clip, EM/TM3, P/N 41124 and Screws 6-32 x ¼ 100FM BLK SS NYL, P/N 27953 
<b>5</b> Cable – Power, 0.6 m, 7P Lemo-to-SAE, P/N 95715 	<b>12</b> Smart battery, P/N 176767 
<b>6</b> Antenna 2.4 GHz stick antenna, SMA P/N 120030 	<b>13</b> Heat shrink, P/N 130951 
<b>7</b> Cable – 1.8 m, DB9/M-DB9/F, Data, P/N 19309-00 	

## Connecting the power cable (P/N 95715)

1. Remove the protection cap from either power port 3 or 4.
2. Remove the protection cap from the LEMO end of the cable (5).
3. Connect the SAE adapter (4) to the SAE end of the cable (5).
4. Line up the red dot on the LEMO end of the cable (5) with the red line on the LEMO socket of the respective power port and connect.
5. Connect the DC socket from the SAE adapter (4) to the power supply (2).
6. If required, apply the heat shrink (13) to the above connection.



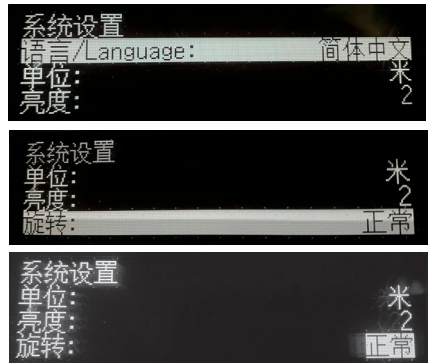
## Display



Description	Description
① Serial number	⑤ Firmware version
② IP address	⑥ Battery 1
③ Number of satellites and positioning mode	⑦ Battery 2
④ UTC date and time	⑧ Logging status

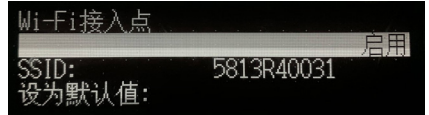
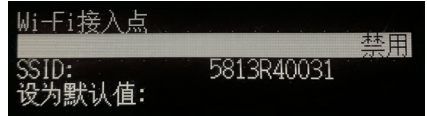
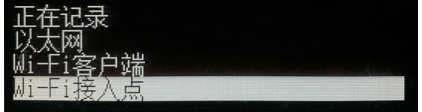
## Rotating the display

1. From the **Home** screen, press . The **System Setup** screen appears.
2. Press the down arrow until **Rotation** is highlighted. Press .
3. Press again. The **Rotation** setting is selected.
4. Press the right arrow key to select **Reversed** and then press . Note that the navigation arrow keys are also reversed.



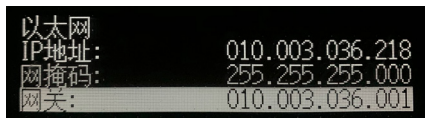
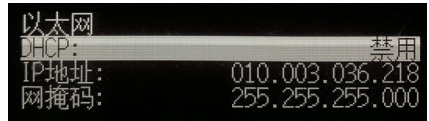
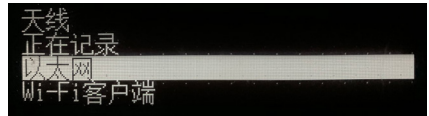
## Setting up the Wi-Fi

1. From the **Home** screen, press **↵**. The **System Setup** screen appears.
2. Press the down arrow key until **Wi-Fi Access Point** is highlighted. Press **↵**.
3. Press **↵** again to activate the **Disable/Enable** setting. If the **Wi-Fi Access Point** is disabled, press the down key to change to **Enable**. Press **↵** to save.
4. Press **Esc** twice to return to the **Home** screen.
5. Open a hand phone and navigate to the **System Settings** and **Wi-Fi** setup.
6. Select the serial number of the current receiver (for example, **AP 5737R0035**) and click to connect. The encryption is **WPA2** (usually automatic). The encryption type is **AES** (usually automatic). Type in the password **abcdeabcde**.
7. Press **OK**. The hand phone should be now connected to the 阿洛伊 receiver with a warning that there is "no Internet access".
8. Open a web browser on the hand phone. In the address bar, enter **192.168.142.1**. The 阿洛伊 web interface is now open on the phone.



## Setting up the Ethernet

1. From the **Home** screen, press **↵**. The **System Setup** screen appears.
2. Press the down arrow key until **Ethernet** is highlighted. Press **↵**.
3. At **DHCP**, press **↵**. The **DHCP** setting is selected. If required, disable/enable DHCP.
4. If DHCP is disabled, using the arrow keys move to the **IP Address** field. Press **↵**. Enter your IP address (for example, **10.3.36.218**).
5. Using the arrow keys, move down to the **Netmask** field. Press **↵**. Enter the required netmask.
6. Using the arrow keys, move down to the **Gateway** field. Press **↵**. Enter the required gateway address.
7. When finished, press **↵** once, then press **Esc** to return to the **System Setup** screen.
8. Restart the receiver for the changes to take effect.
9. Open a web browser on a computer connected to the LAN. In the address bar, enter your IP address (for example, **10.3.36.218**). The 阿洛伊 web interface appears.



Help is available in the web interface, or go to [realtimenetworks.trimble.com/Trimble-Alloy.aspx](http://realtimenetworks.trimble.com/Trimble-Alloy.aspx).

© 2018–2024, Trimble Inc. All rights reserved. Trimble, and the Globe & Triangle logo are trademarks of Trimble, registered in the United States and in other countries. All other trademarks are the property of their respective owners. Trimble Inc., 10368 Westmoor Drive, Westminster CO 80021, USA. P/N 10950-XX-QS-CN, Rev G, April 2024. Doc ID 1340064159.

